



ABÖD



ABÖD 36 © 2024

240709

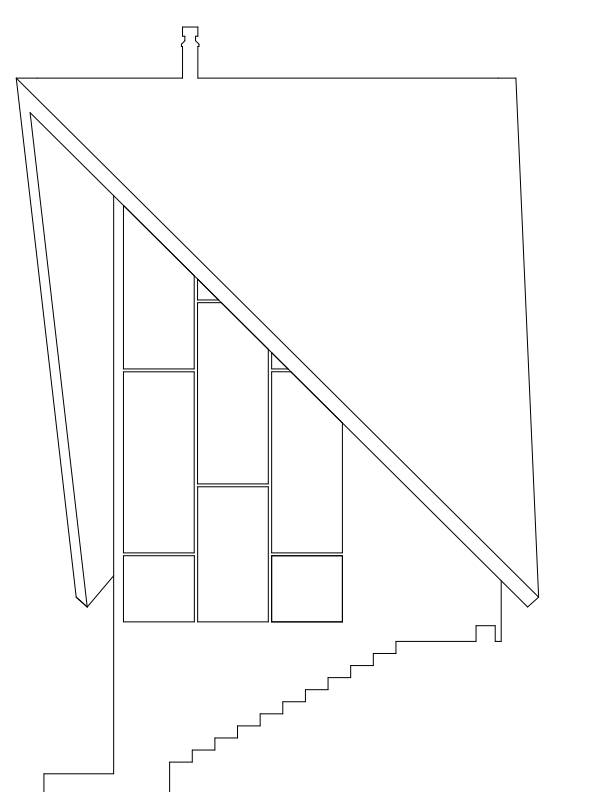
DiamondCABIN

A B Ō D

a•bode¹ | a'bōd | noun *formal, or literary*

You are most welcome to my humble abode.

HOME, house, a place to **EXPERIENCE LIFE**/habitation, habitat, base seat; quarters, lodgings, rooms; address, location, place, whereabouts; *informal* pad, digs, diggings; *formal* dwelling, dwelling place, residence, habitation.



Why Diamond**CABIN**?

1

Quality: Premium design, products and materials

Discover ABÖD 36's unparalleled commitment to quality. From the commercial-grade all-steel structure to the floor-to-ceiling glass walls, every detail is meticulously designed to evoke awe and elevate your experience. DiamondCABIN feels twice its size, yet lives even bigger.

What sets us apart? Our unwavering dedication to premium materials and commercial-grade products .

2

Cost: Prices that can't be matched

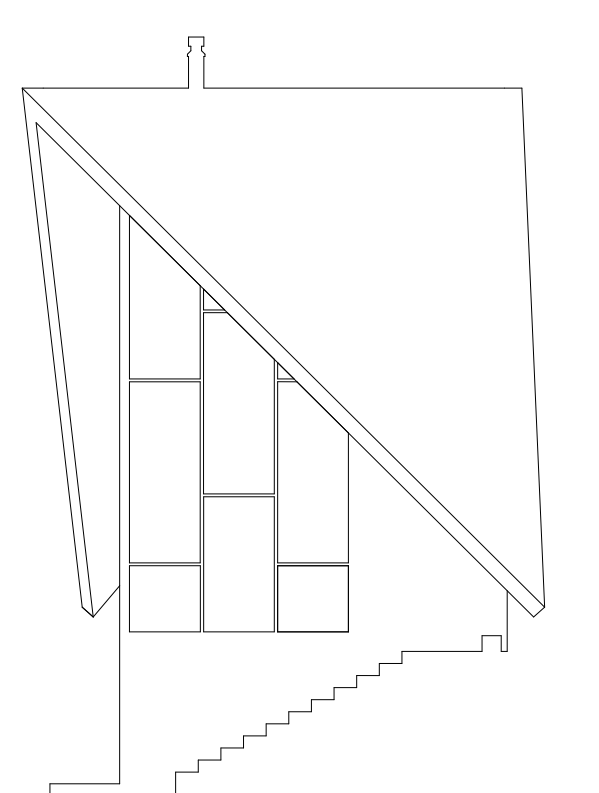
Unlock a world of unmatched value with ABÖD 36's groundbreaking manufacturing approach. Our secret lies in harnessing market dynamics to your advantage, ensuring prices that defy comparison. When we say "not even close," we mean it—our commitment to affordability sets us apart. Explore the extraordinary at ABÖD 36 !

3

Ease: Fast and easy approvals and assembly

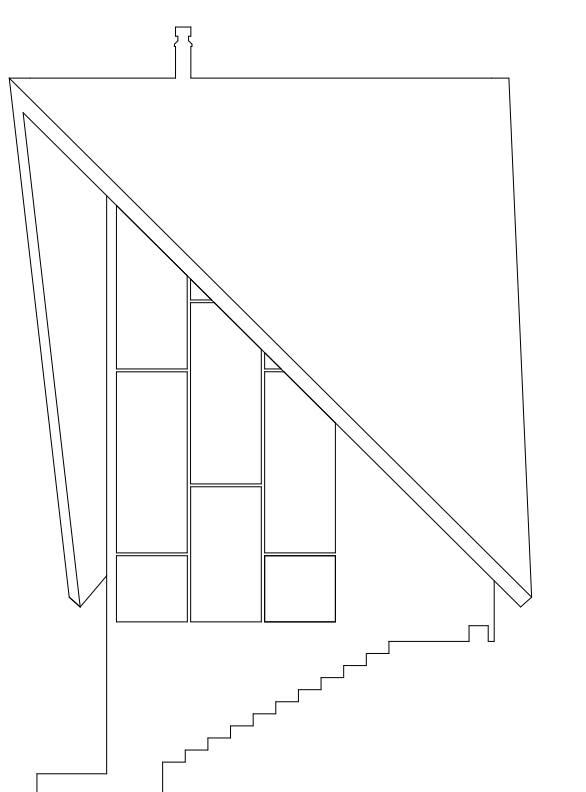
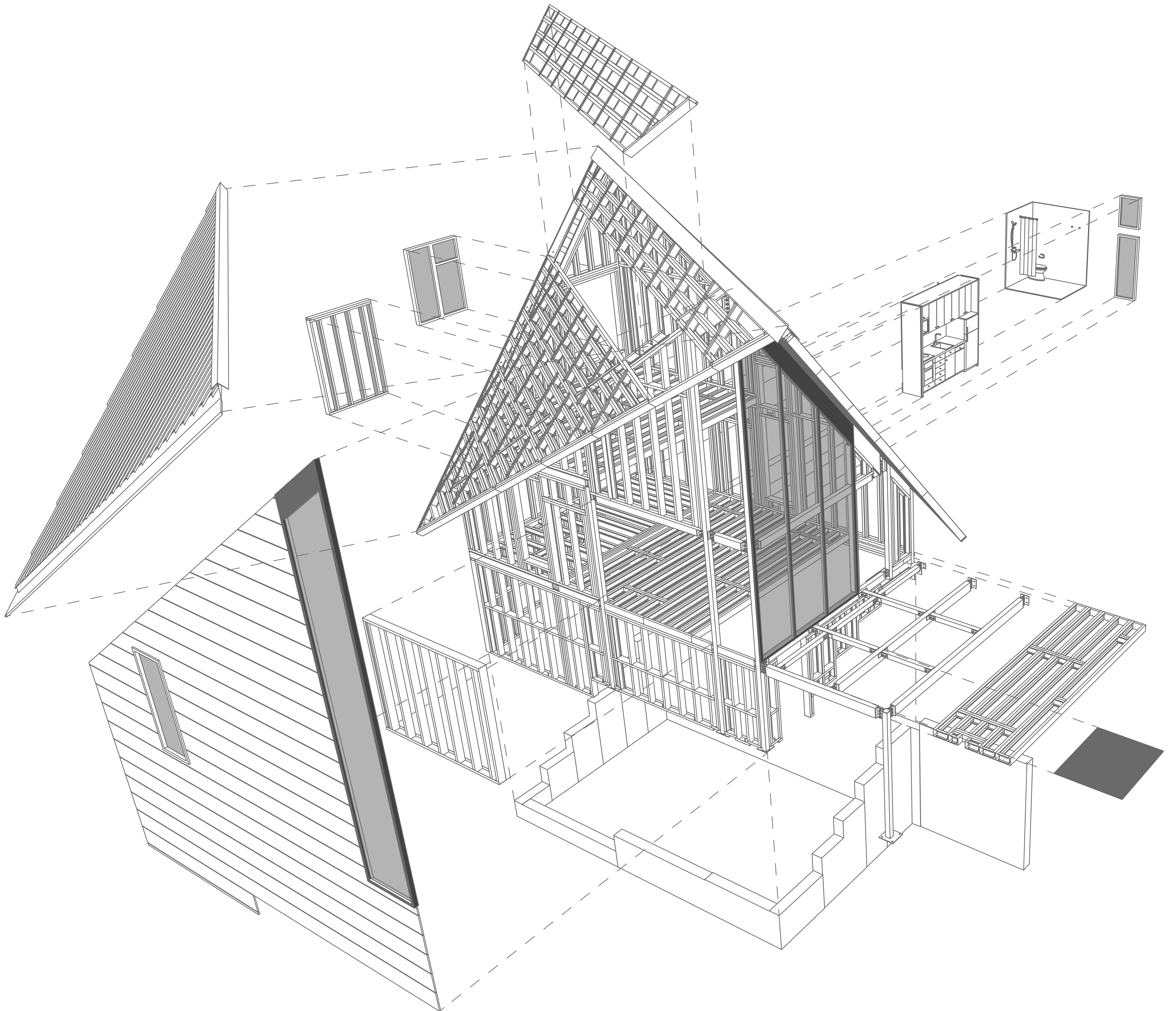
ABÖD 36's roots in California signify more than just a location. If we can build here, you can build anywhere. Our engineers understand the intricacies of local engineering criteria, collaborating closely with your authorities to streamline approvals. And when it's time to build, our revolutionary DiamondCABIN Kit slashes construction time by approximately 40% compared to traditional methods. Efficiency meets excellence at ABÖD 36 !

[Get an estimate](#)



Diamond**CABIN**



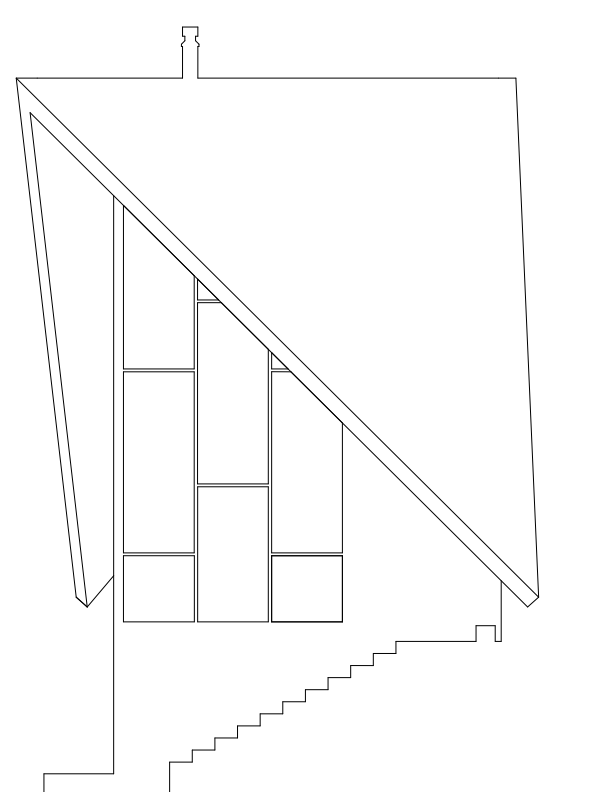


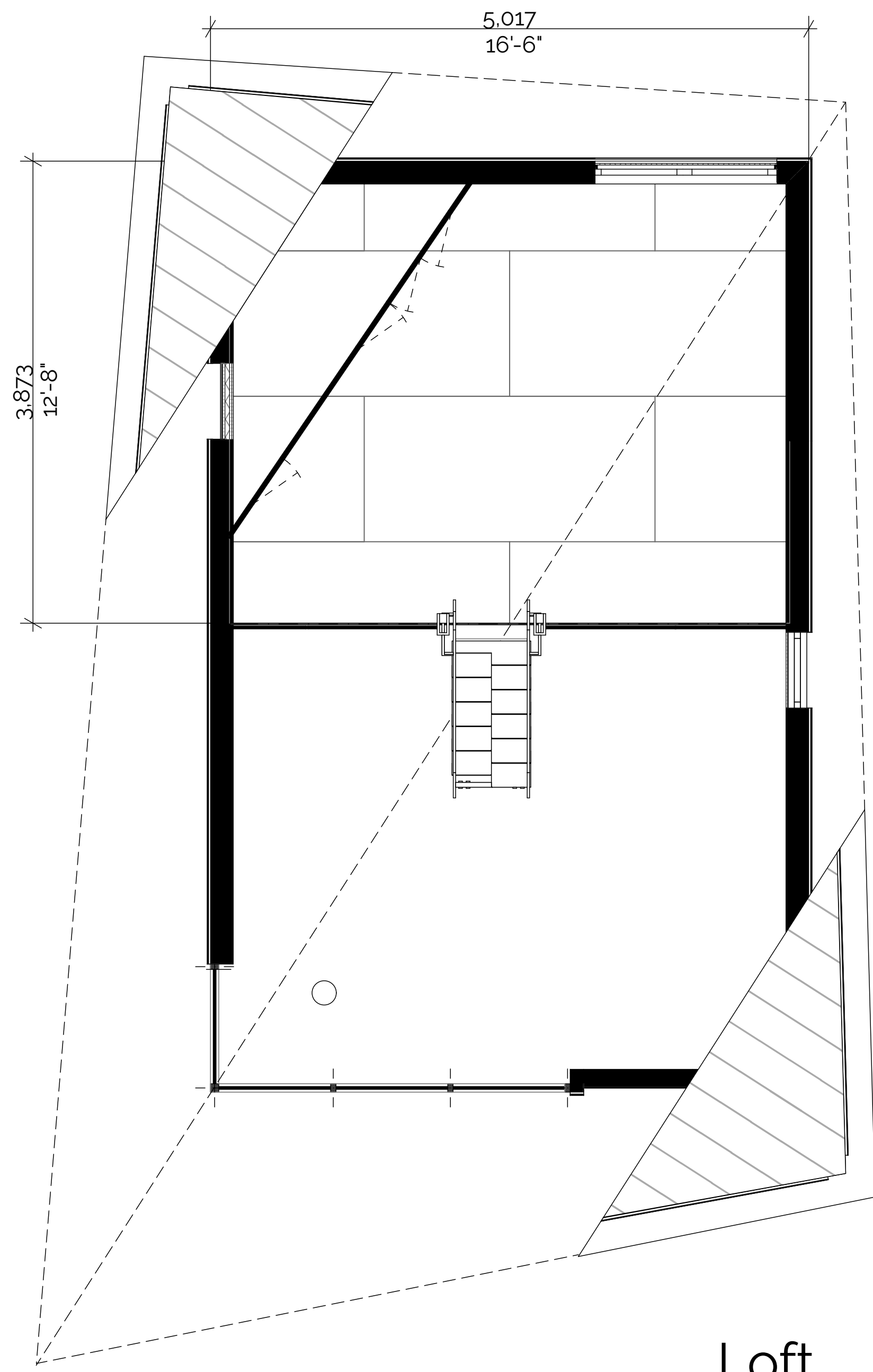
A B \bar{O} D

Experience

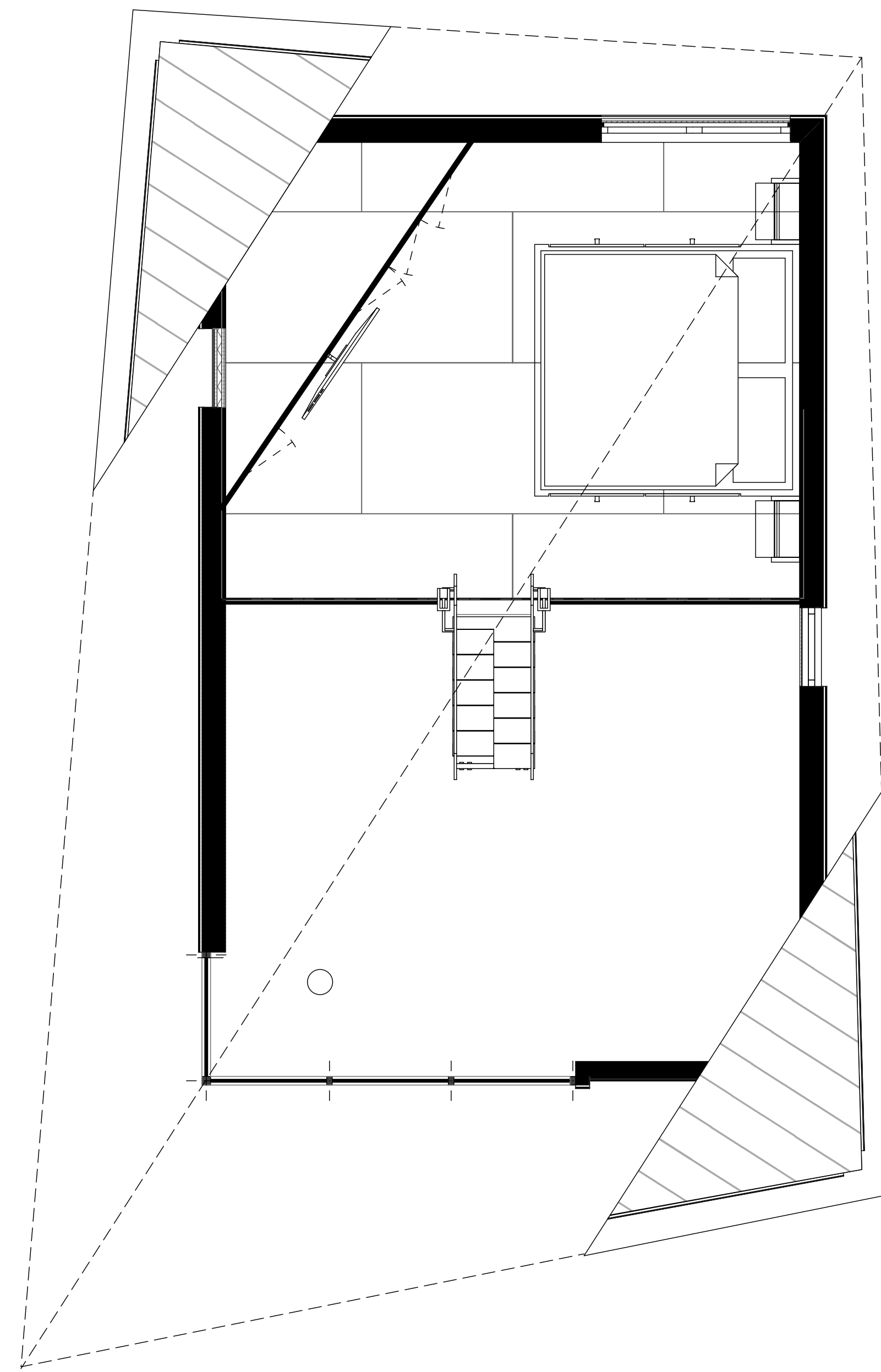
You've got to **start with the [guest] experience** and work backwards to the technology.

~ Steve Jobs

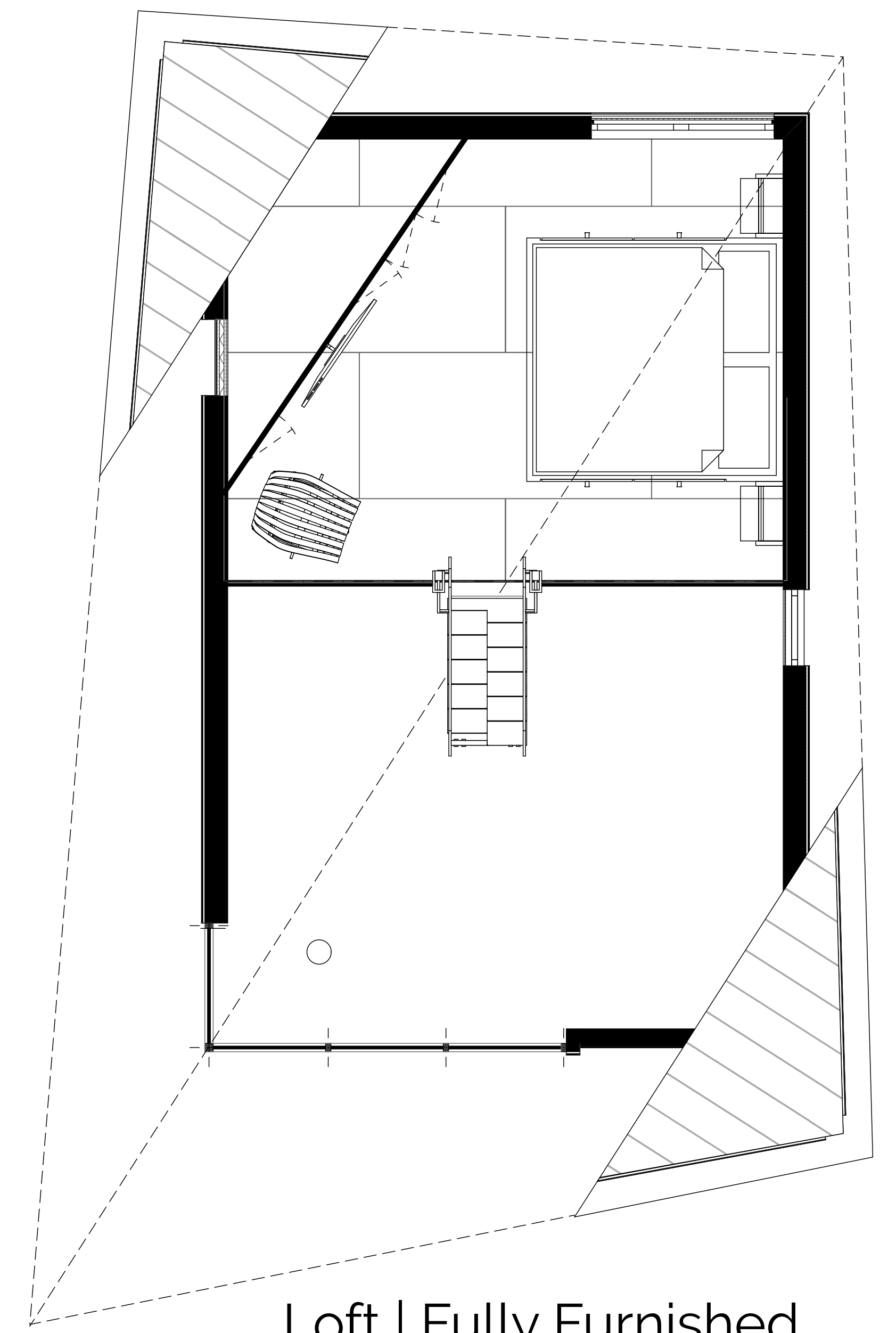




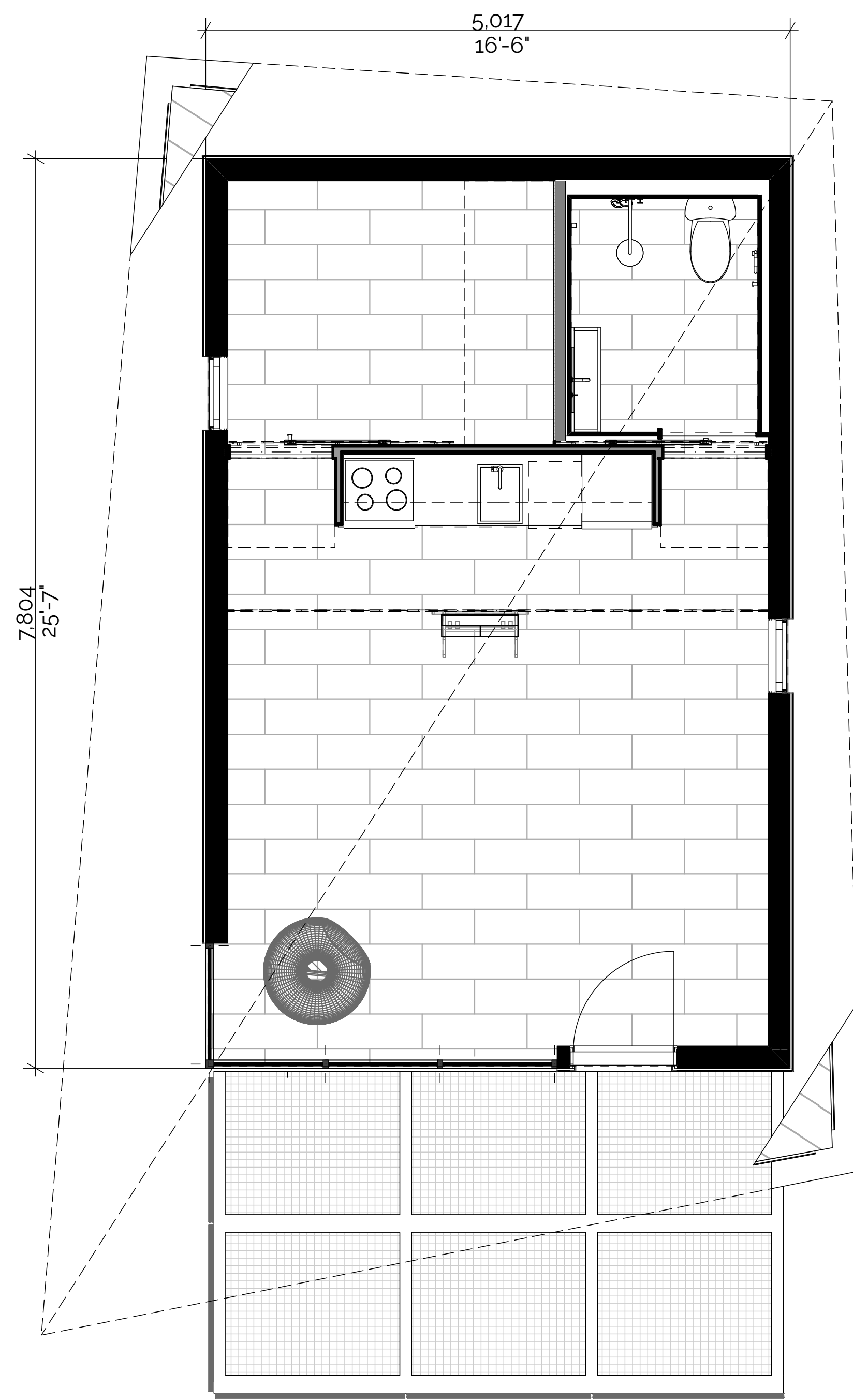
Loft



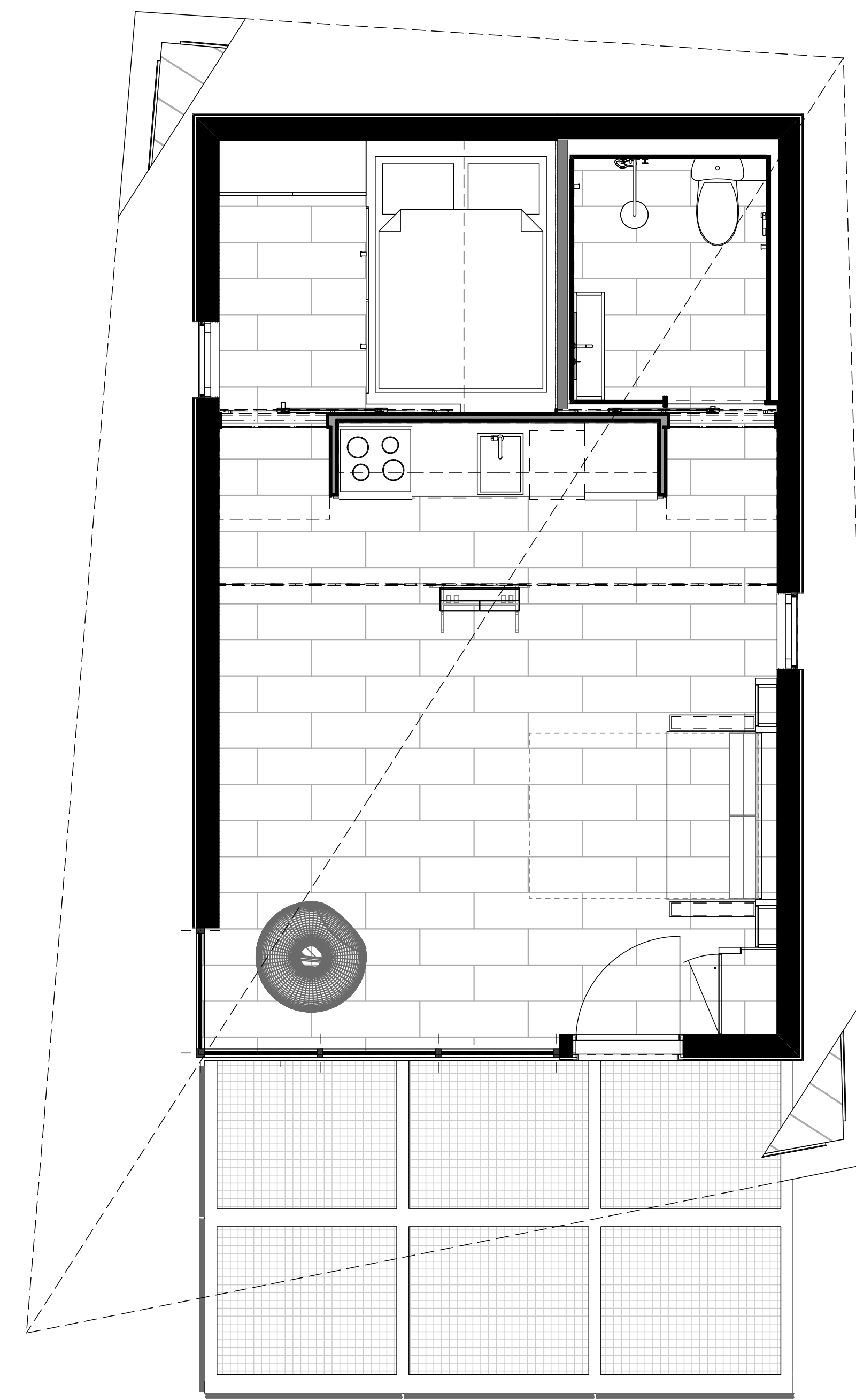
Loft | Built-ins



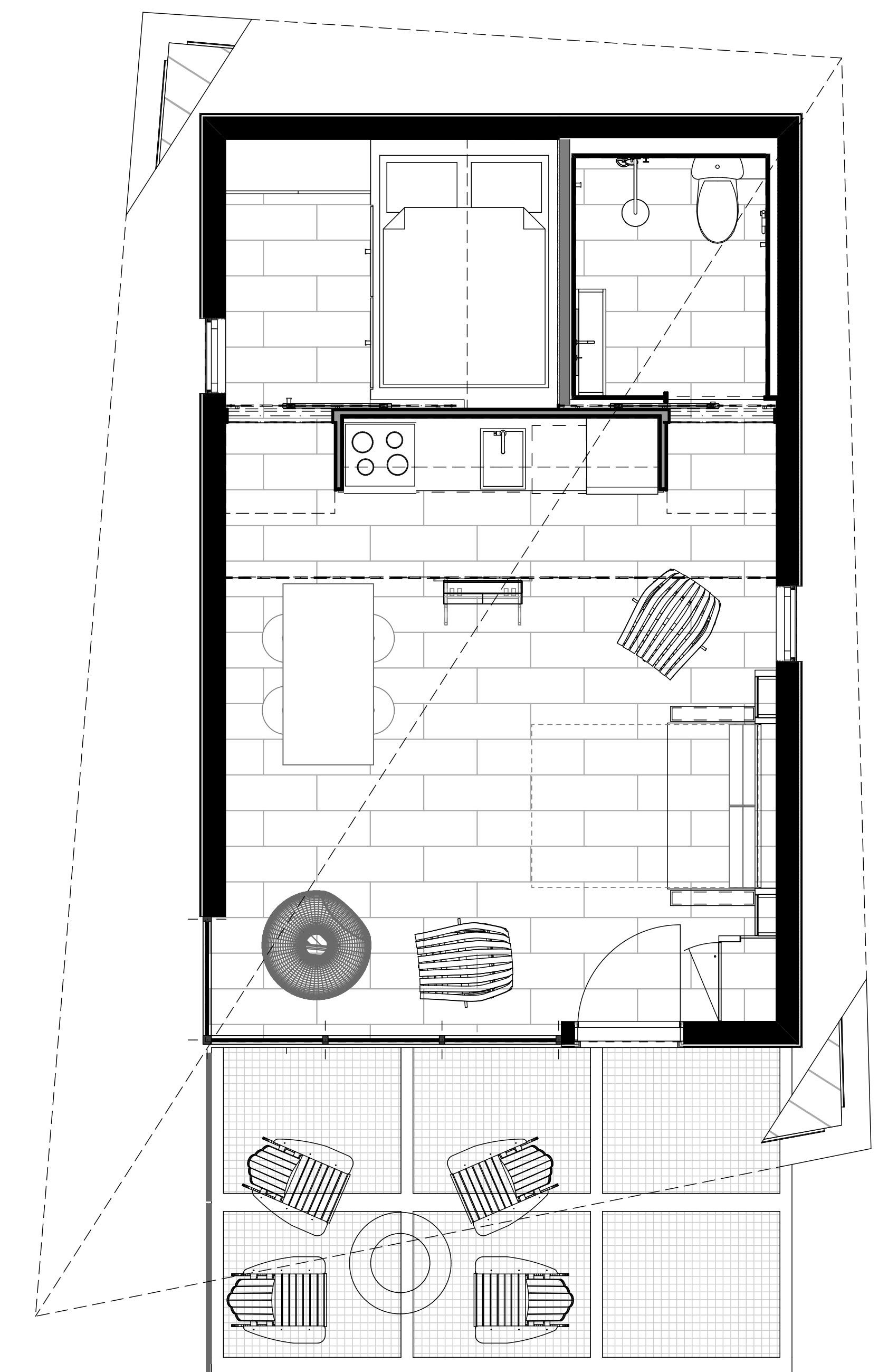
Loft | Fully Furnished



Ground Floor



Ground Floor | Built-ins



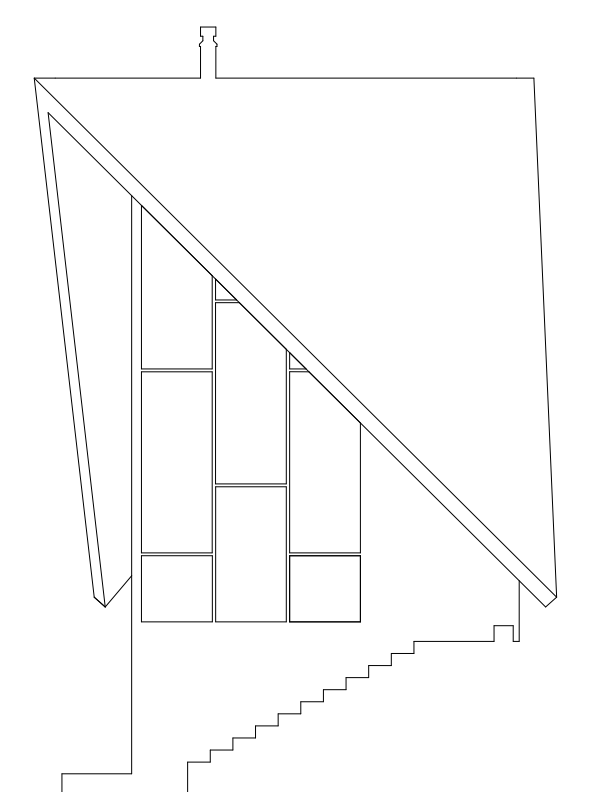
Ground Floor | Fully Furnished

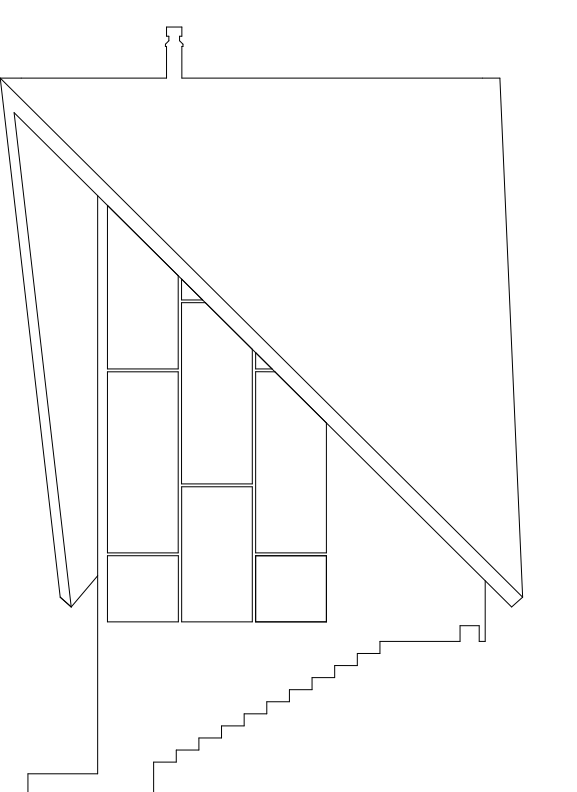
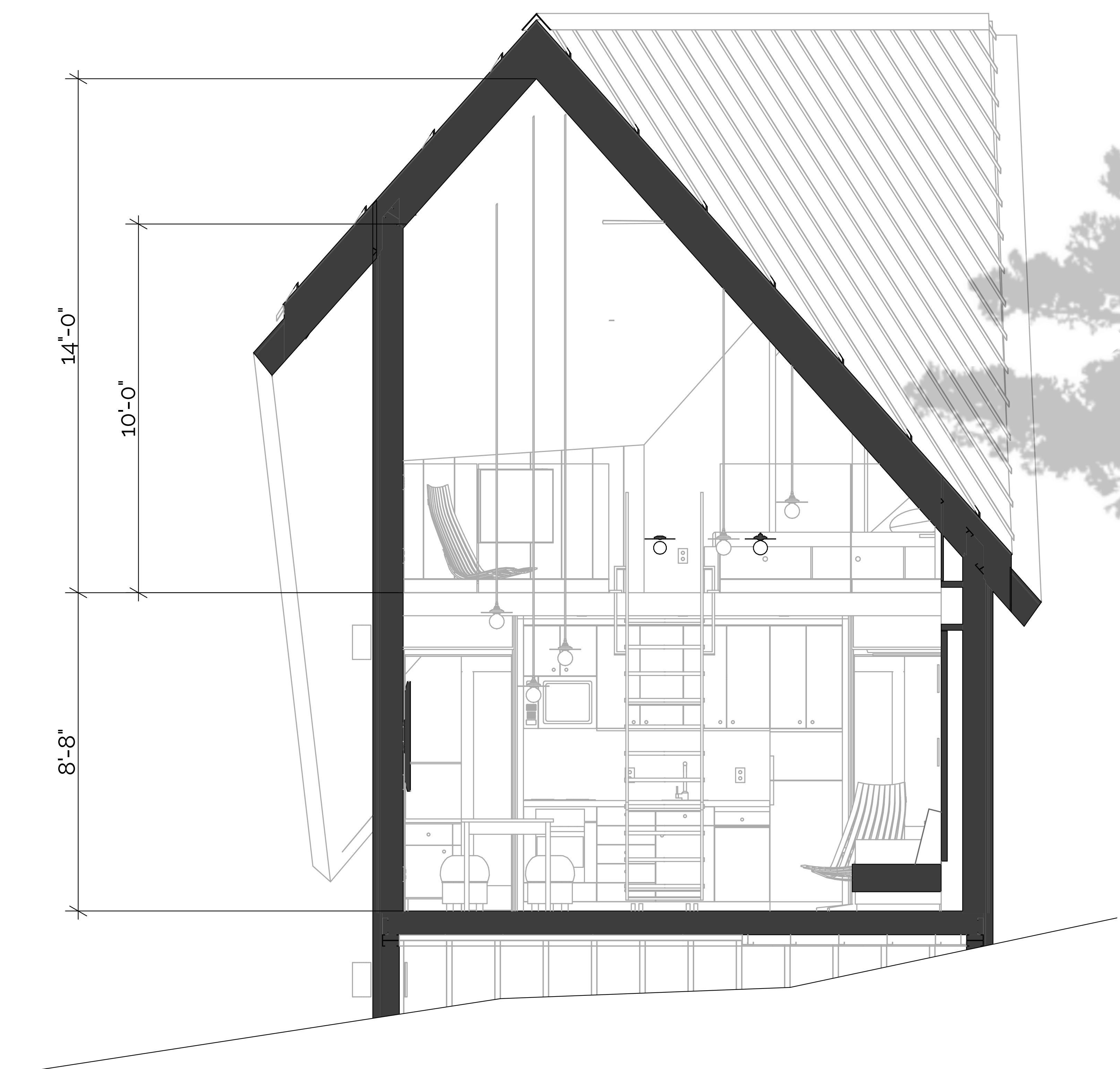
DiamondCABIN

Ground Floor Area 436 sq. ft. 40.5 m2

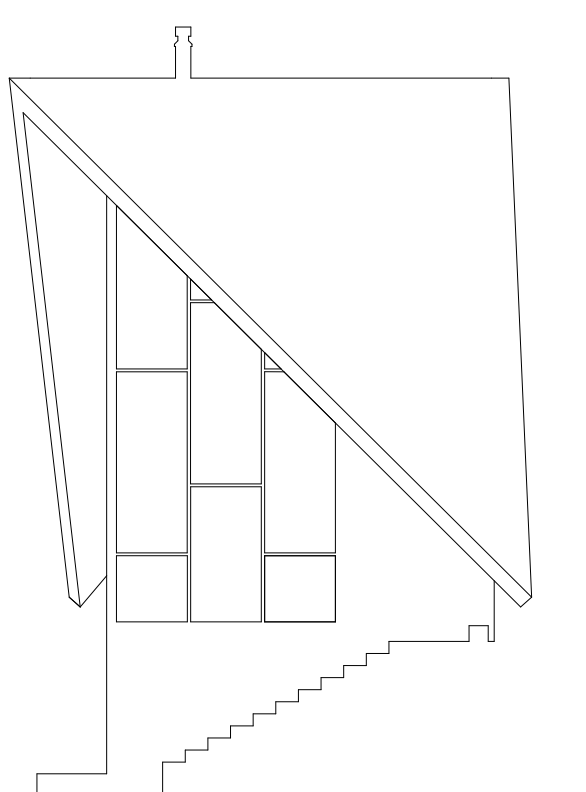
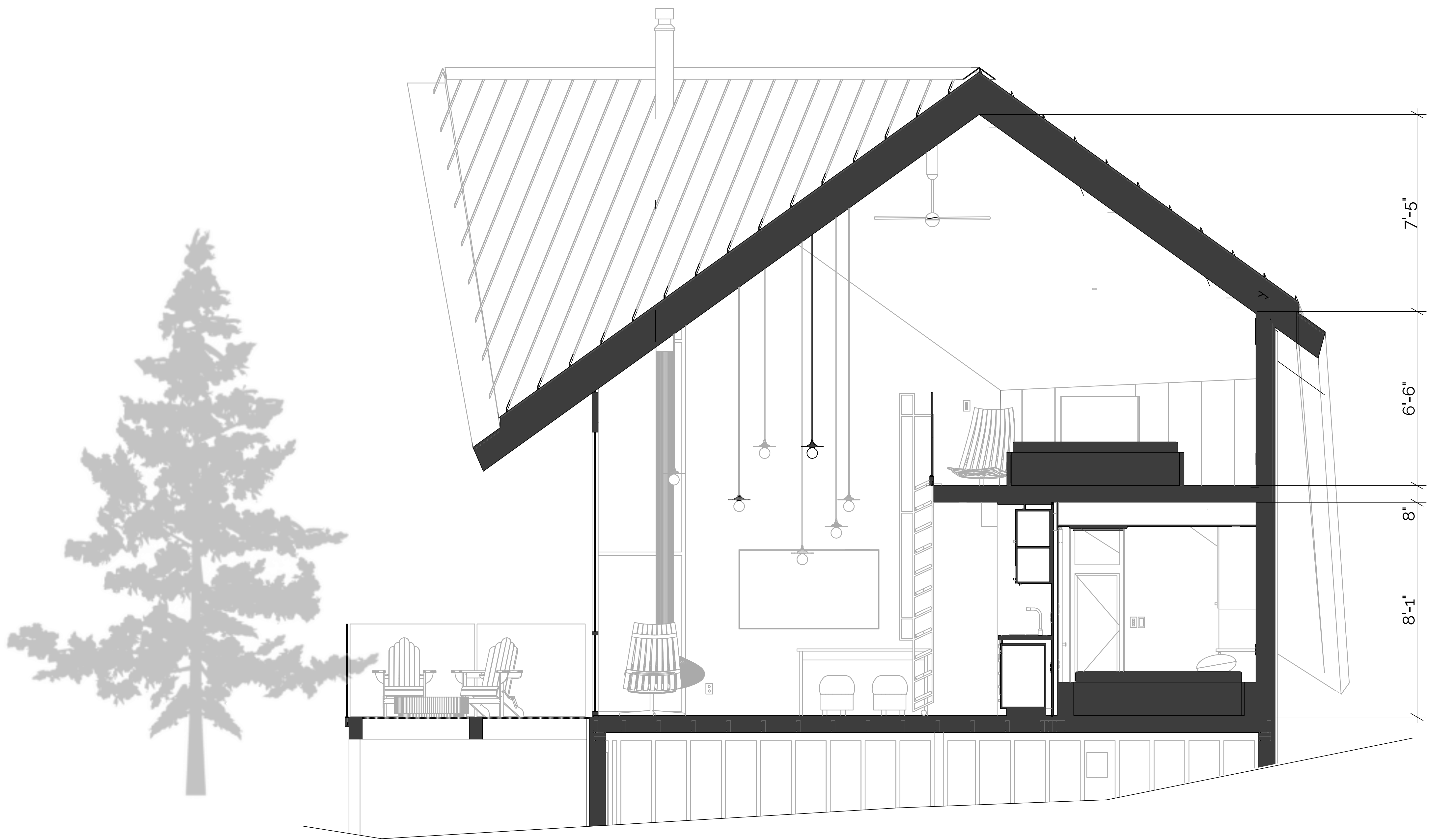
Loft Floor Area: 164 sq. ft. 15 m2

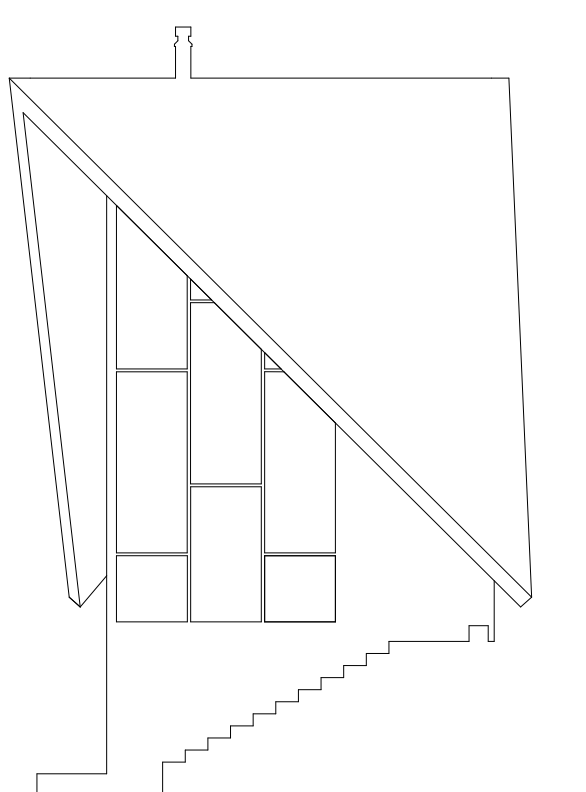
Total Floor Area: 600 sq. Ft. 55.5 m2

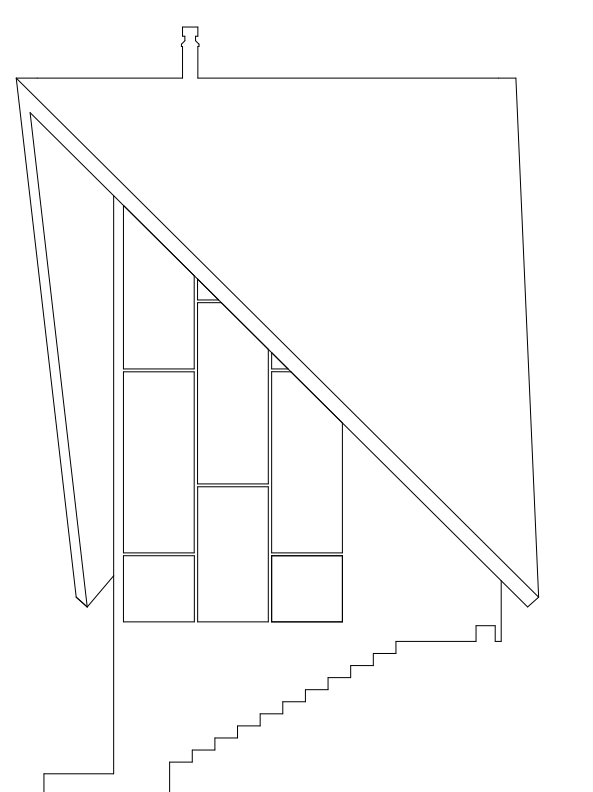
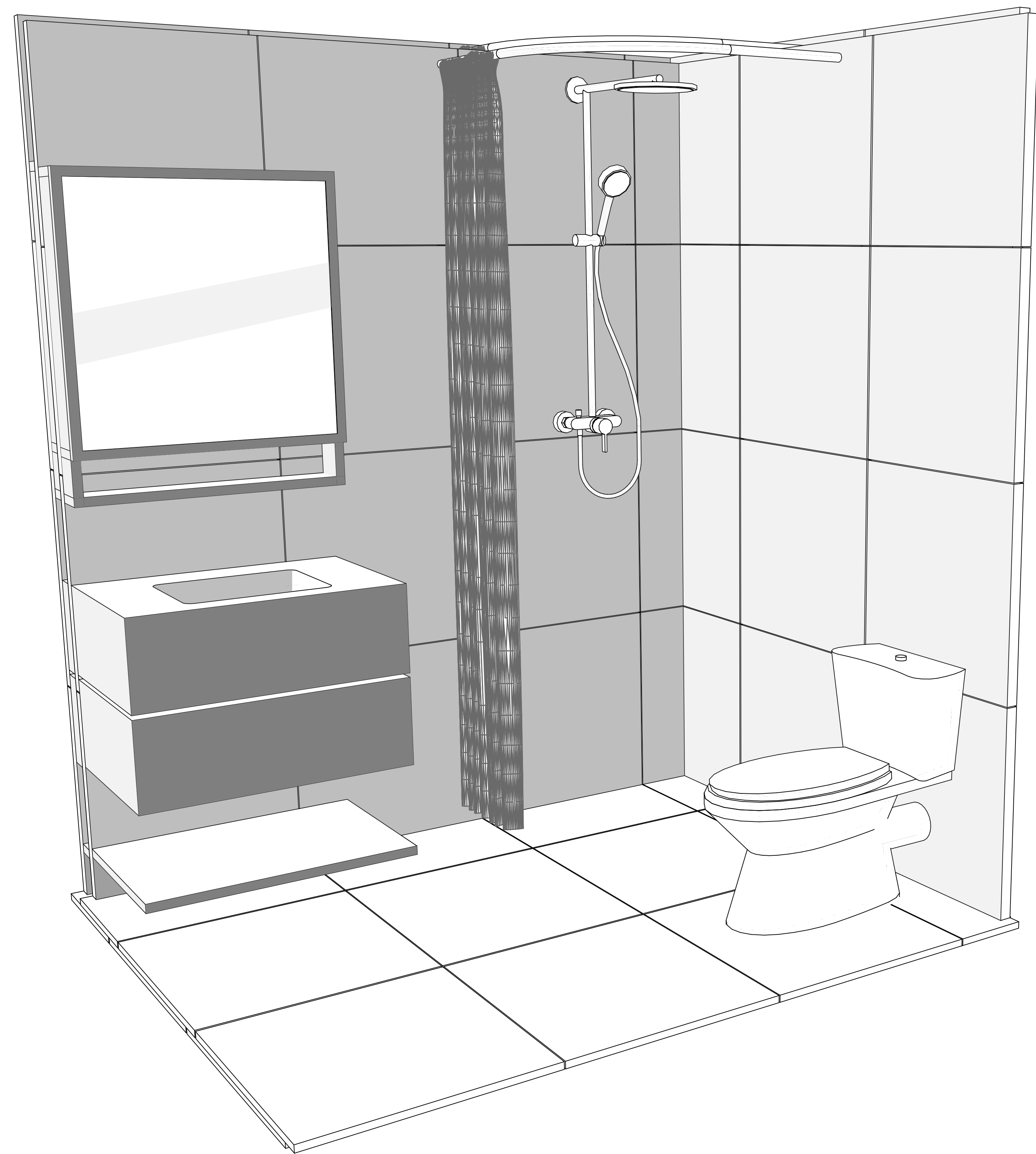


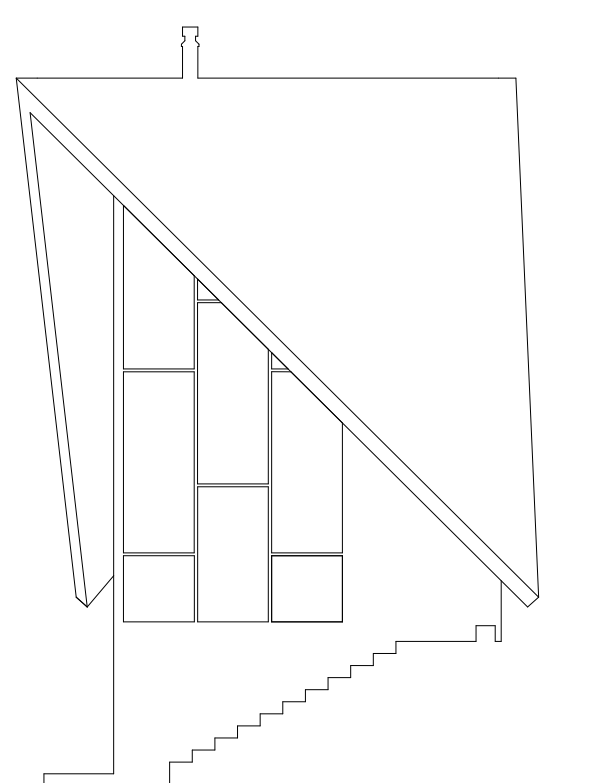
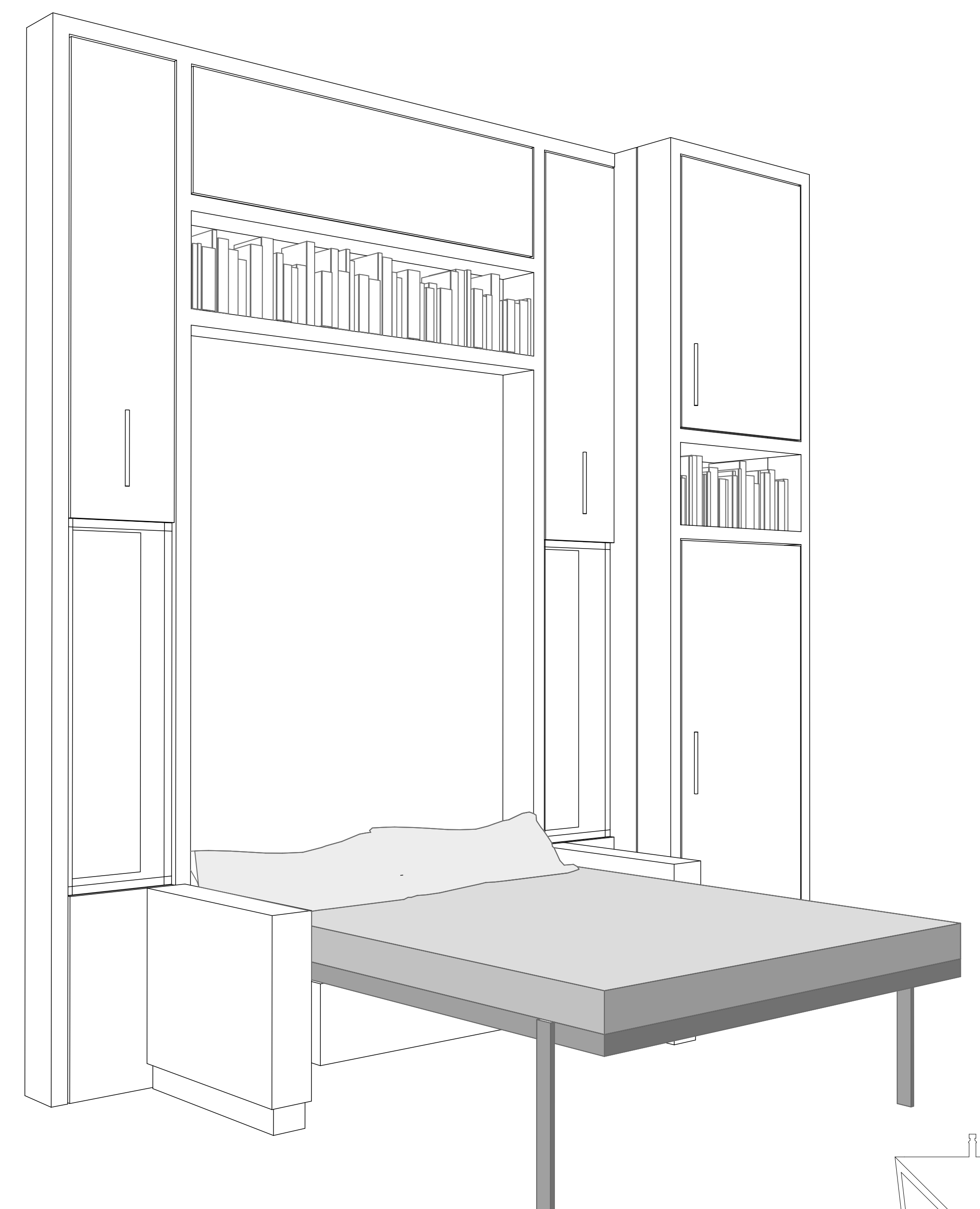
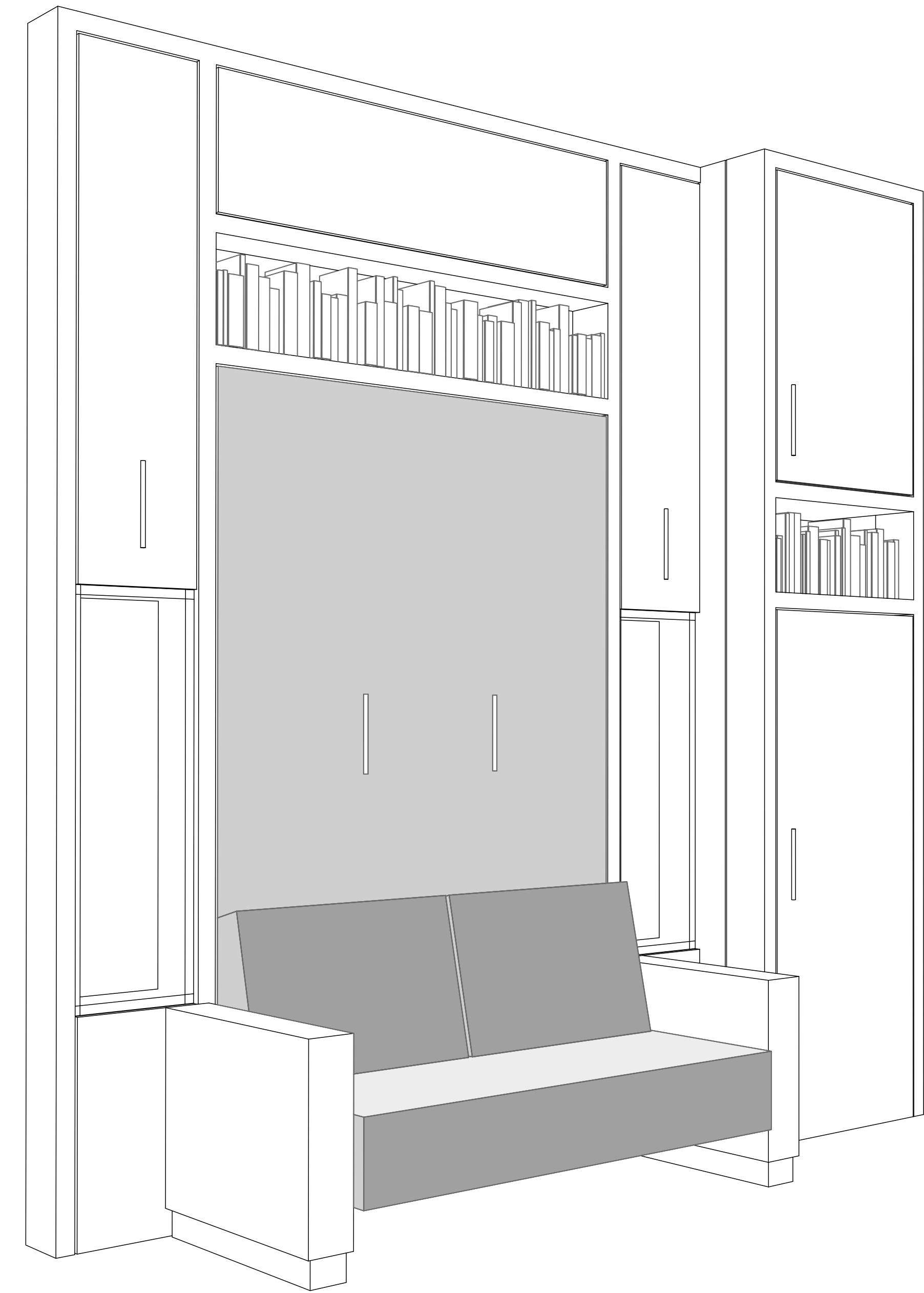


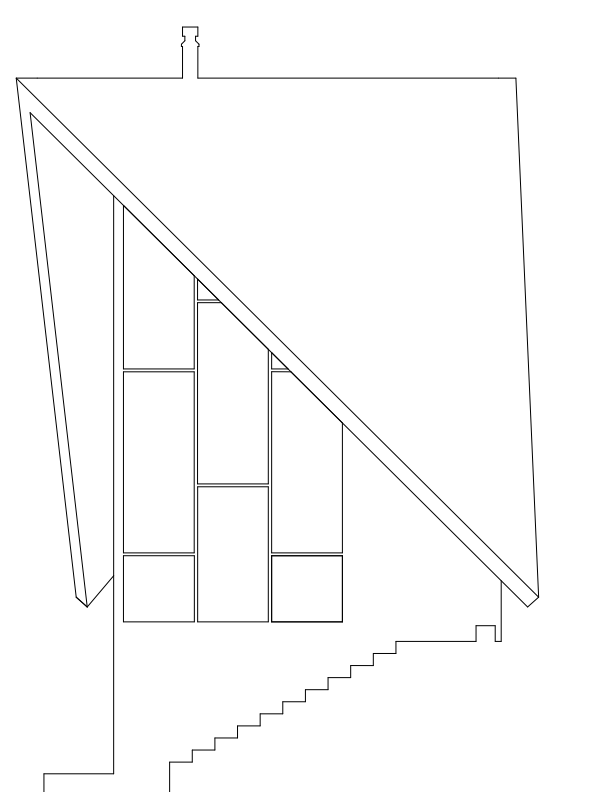
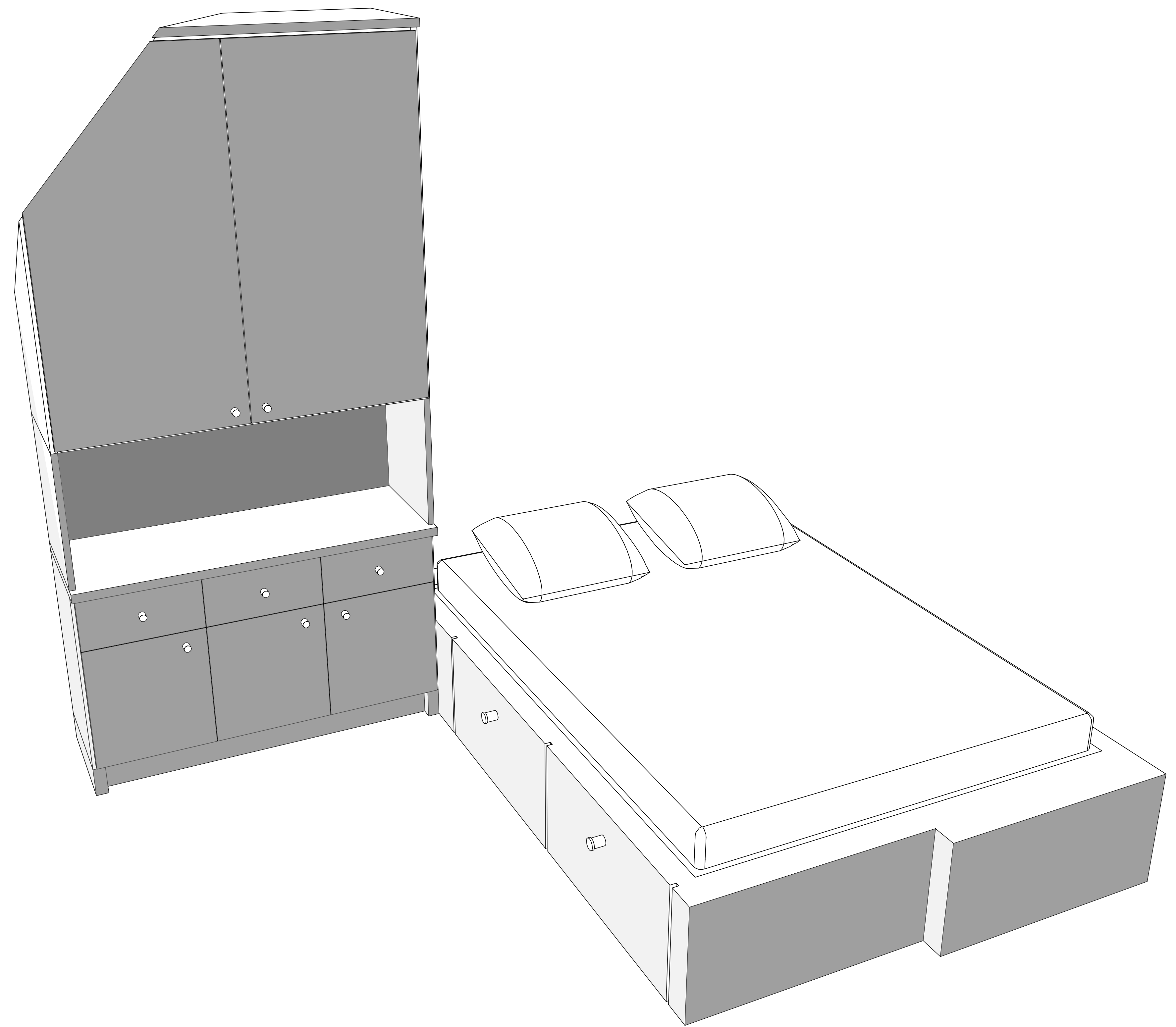
Cross Section | Diamond**CABIN**

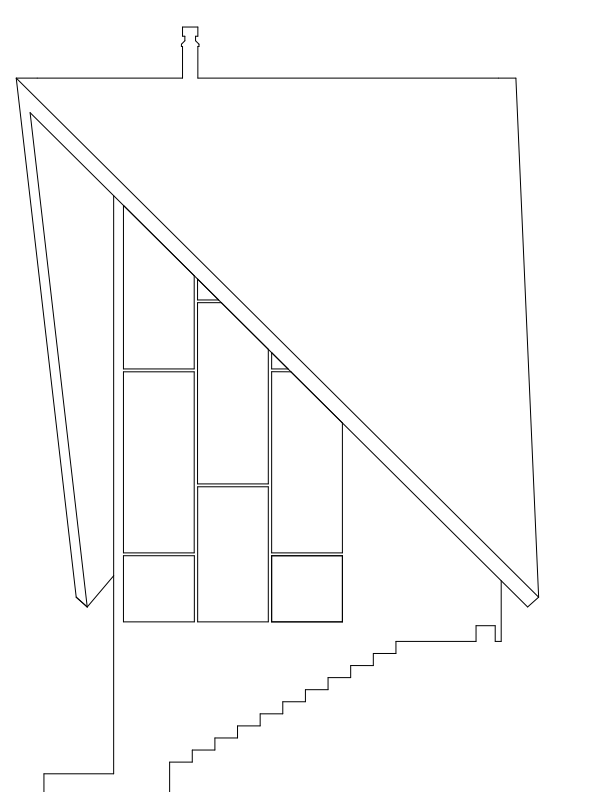
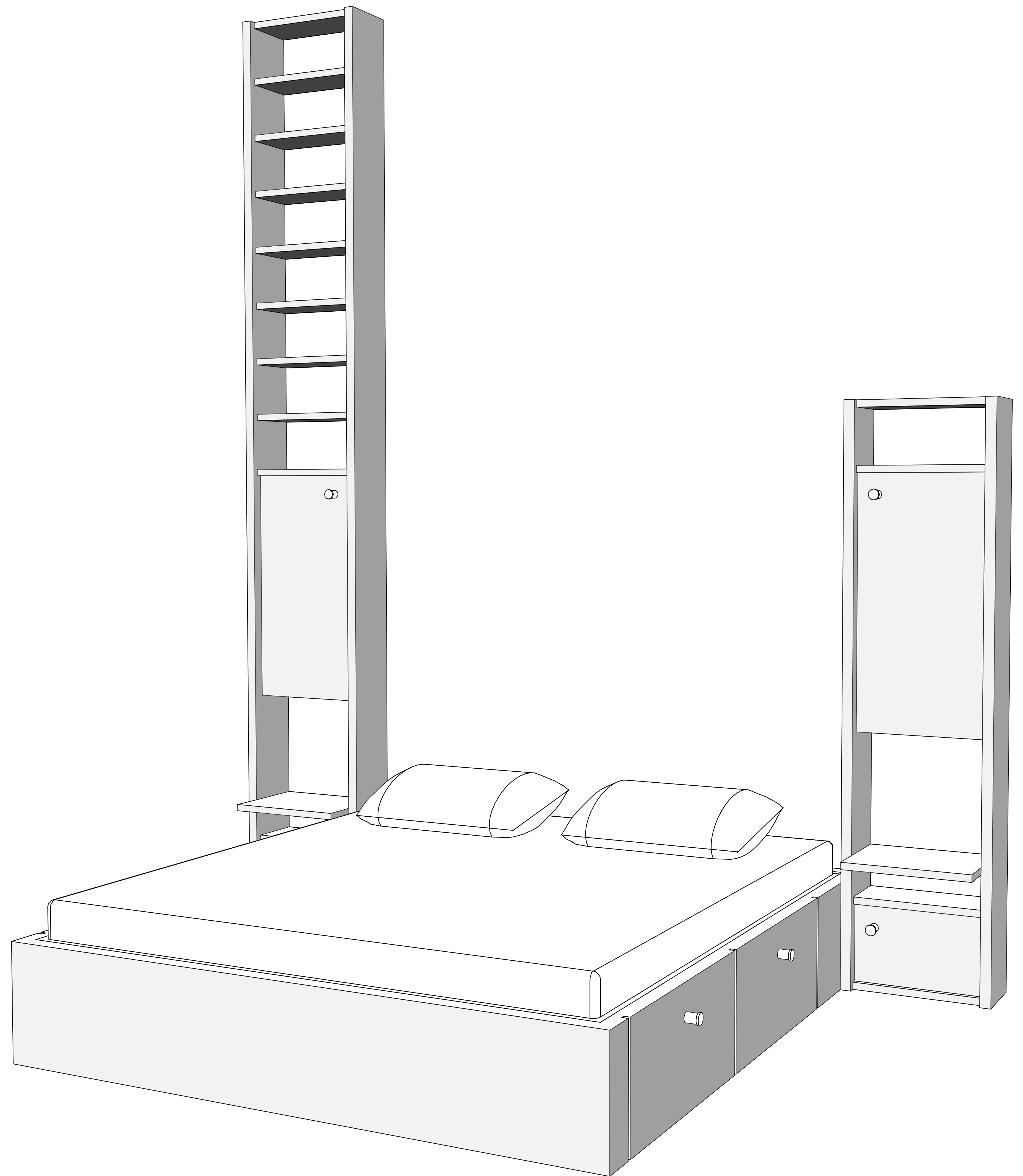


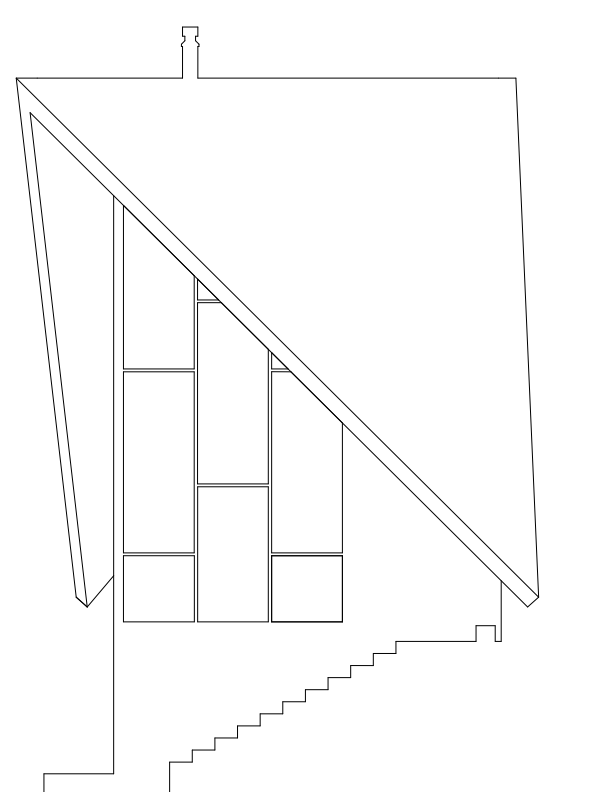
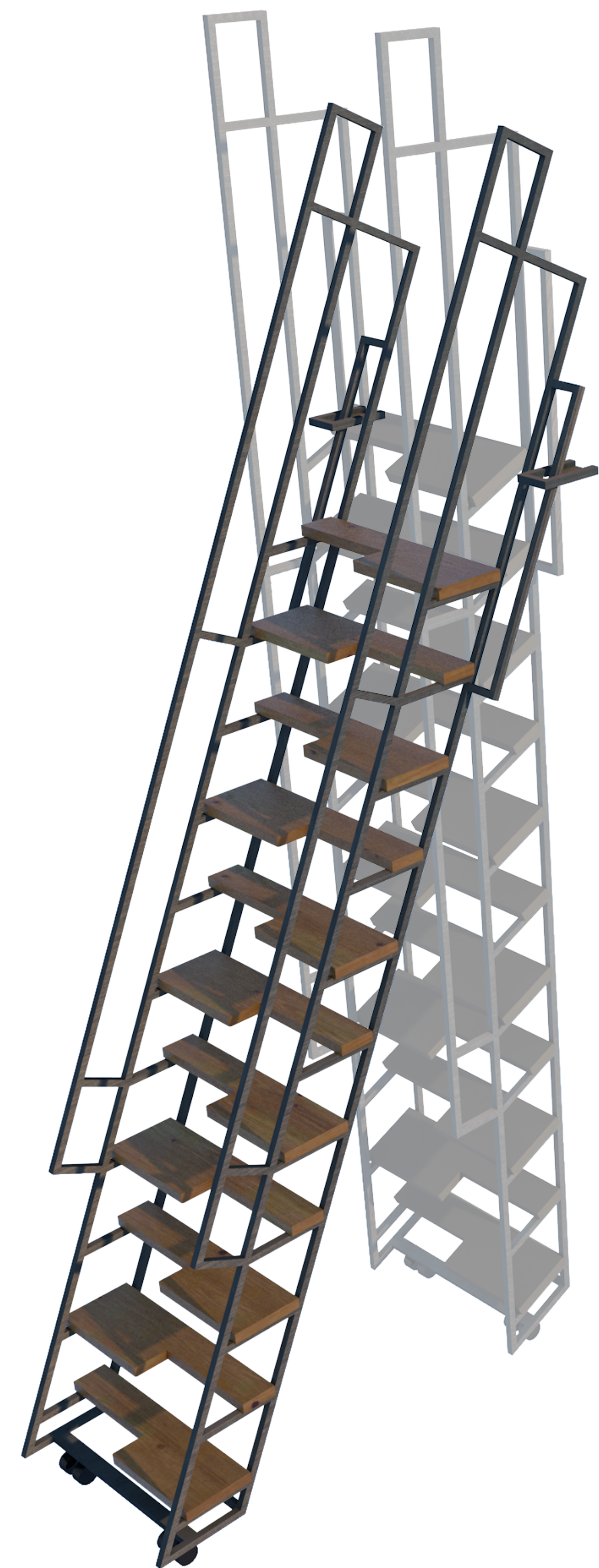


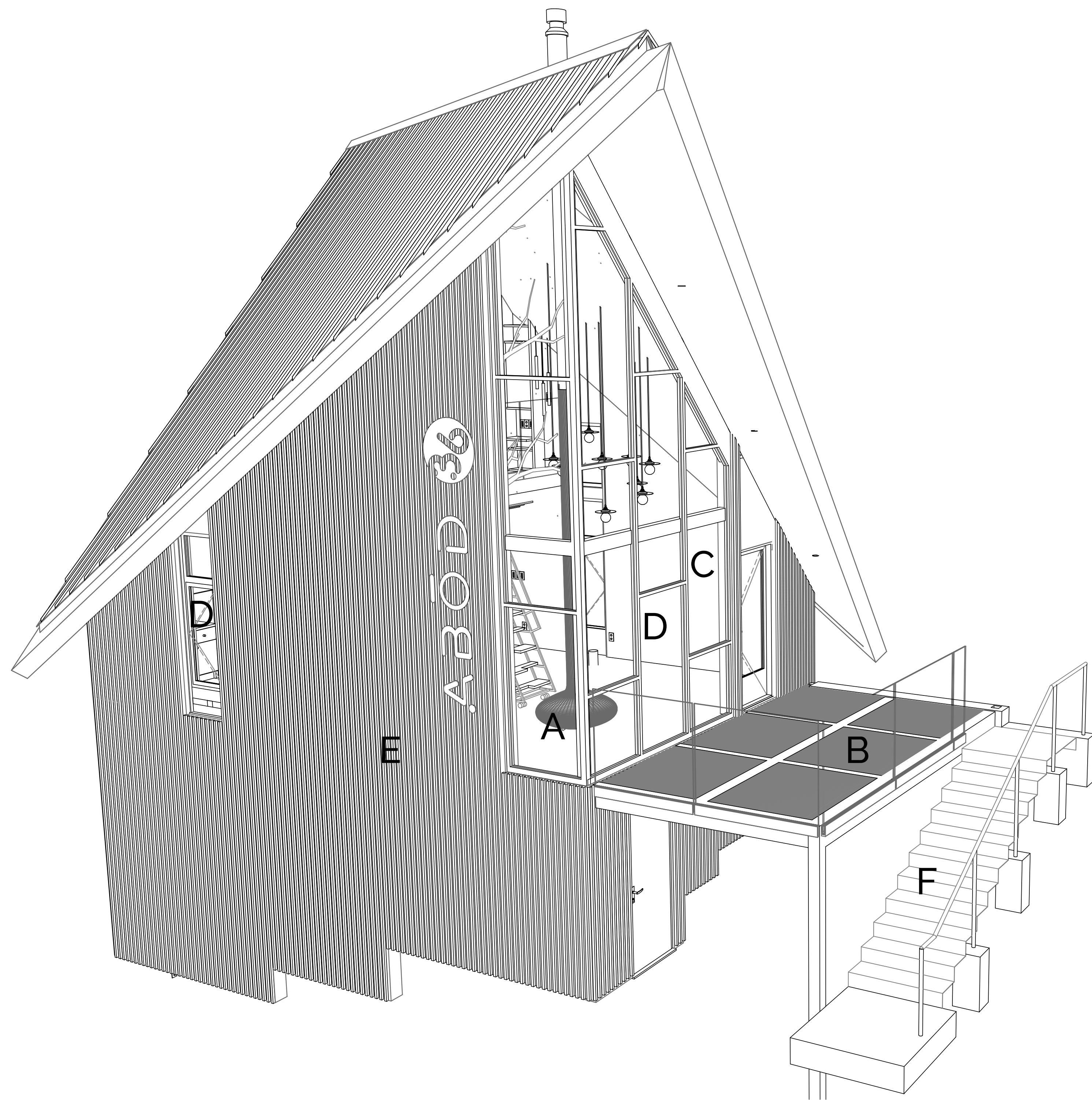








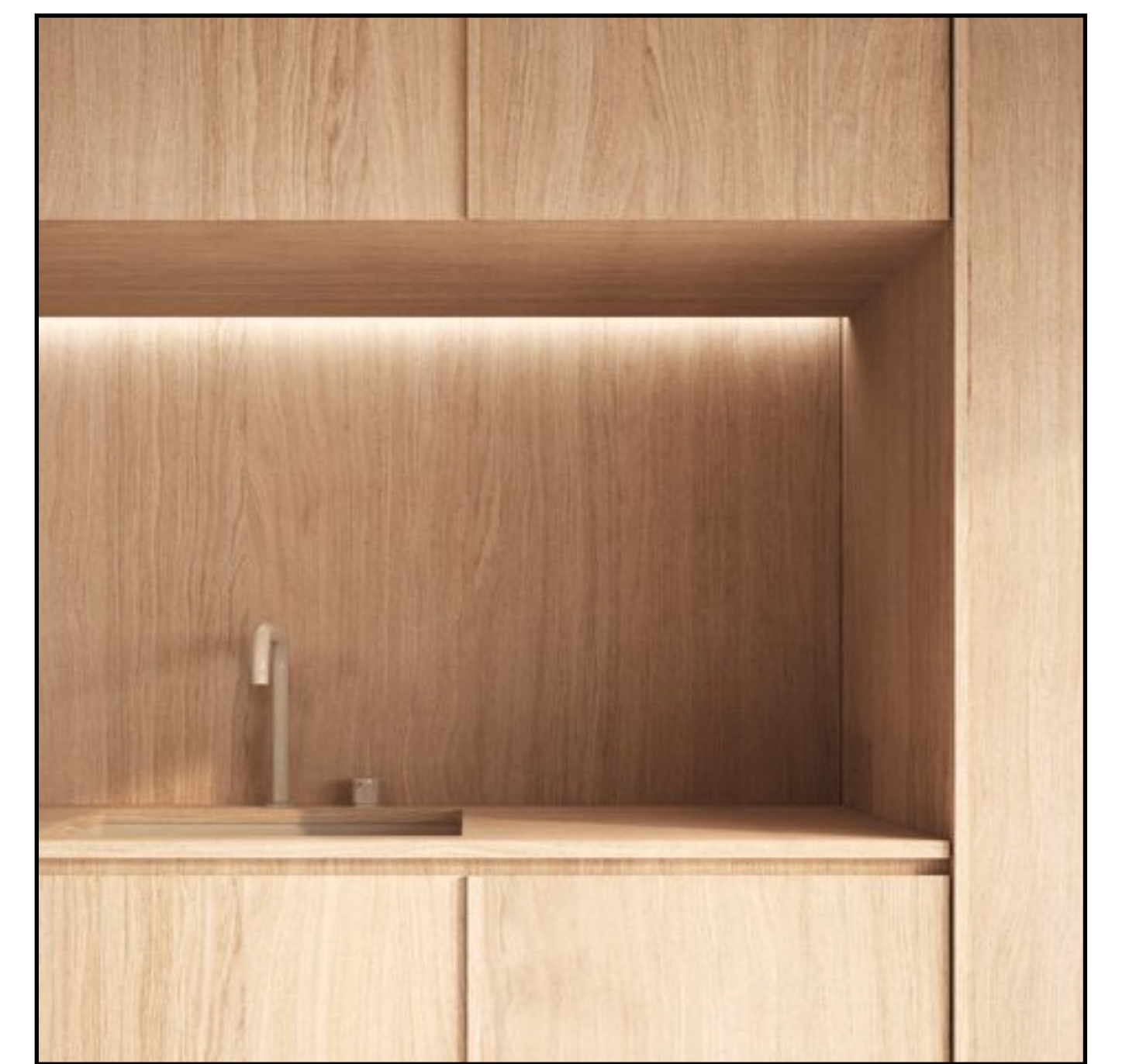




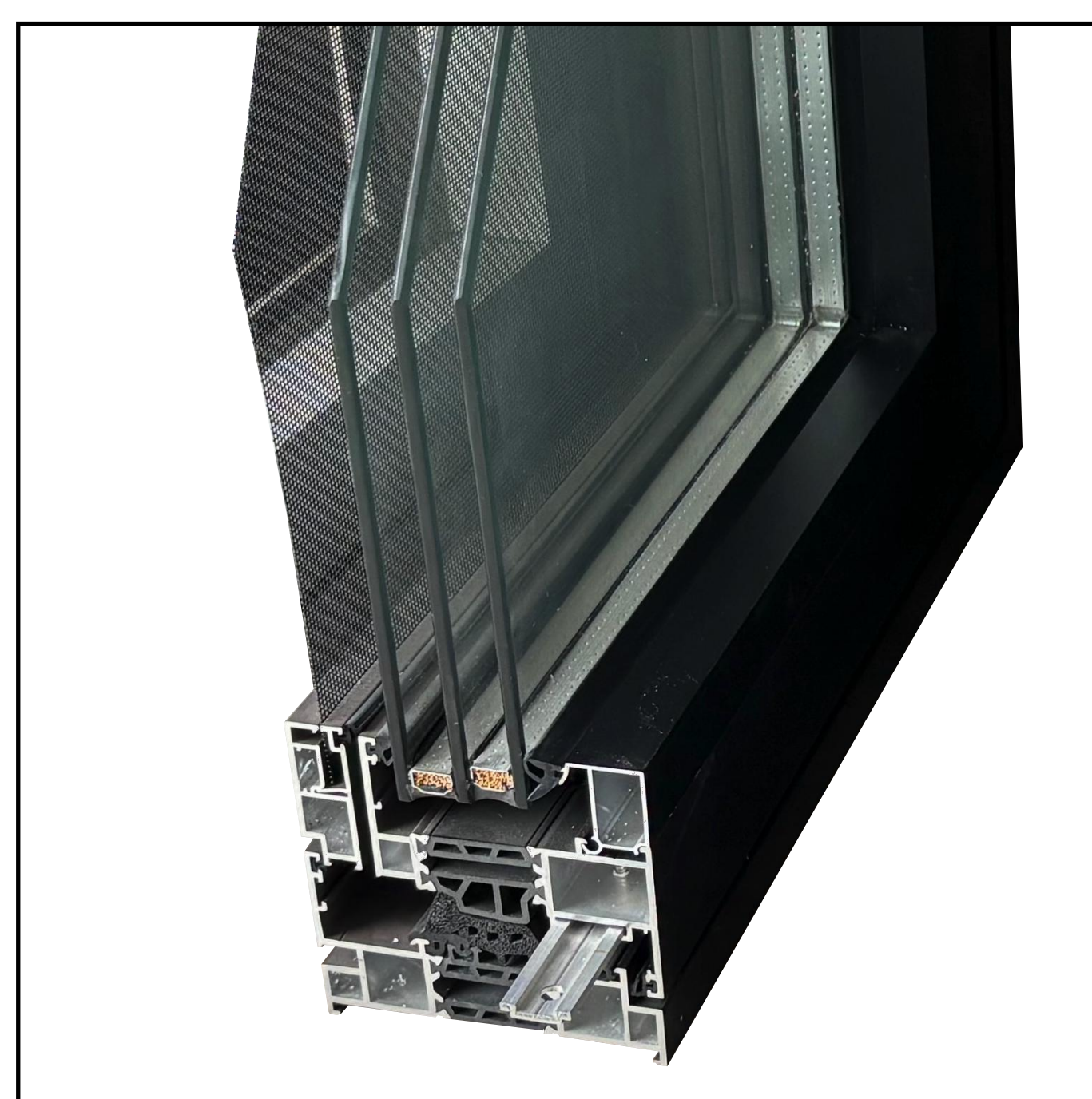
A
Hanging fireplace



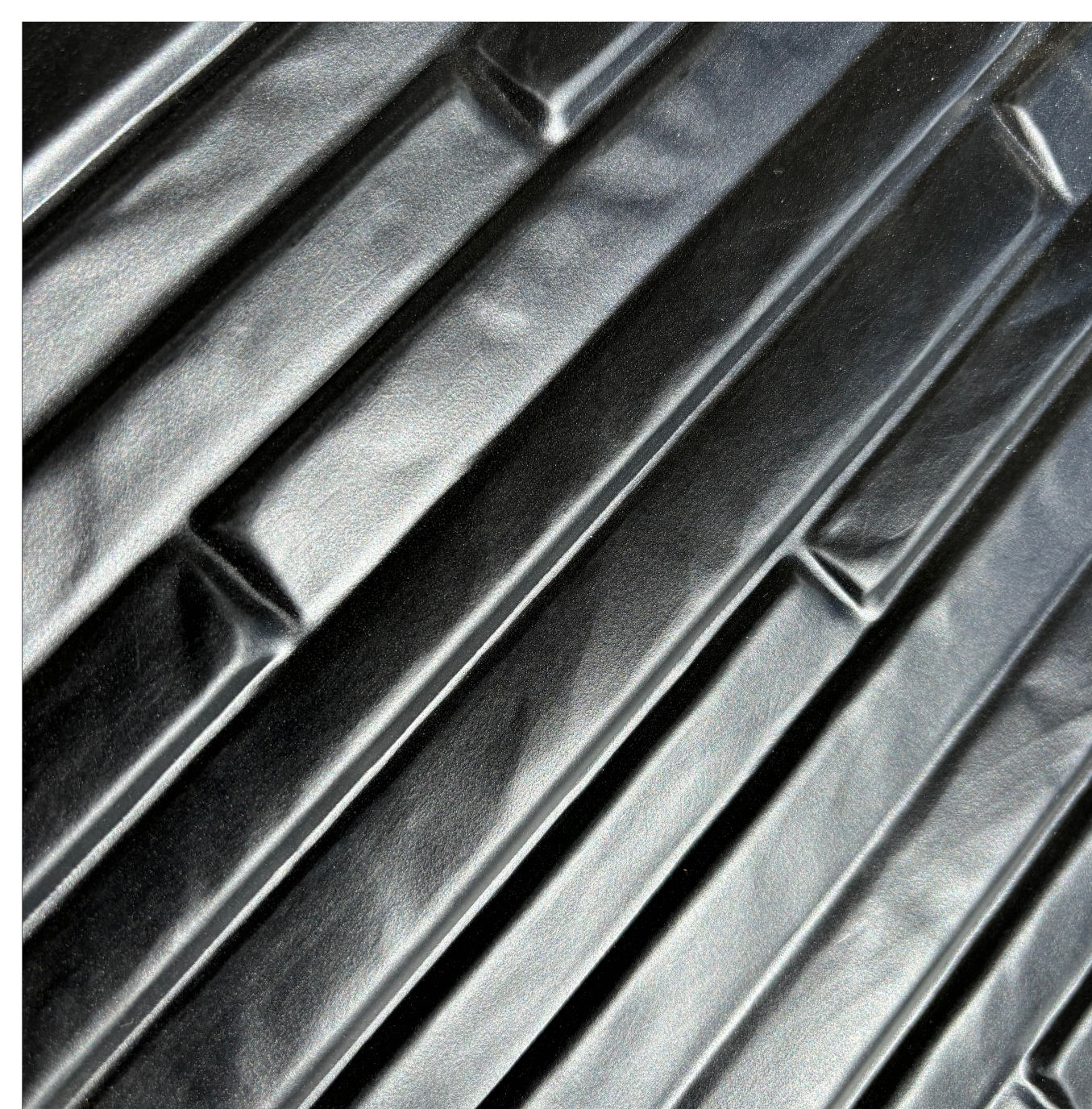
B
Glass railings



C
Wood veneer paneling



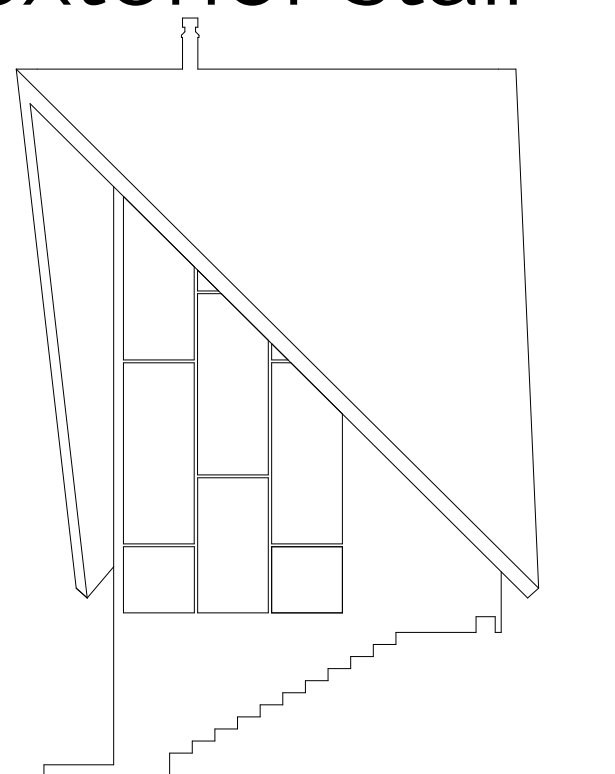
D
Triple glazed, commercial grade windows



E
Long life exterior metal siding



F
Corten steel exterior stair



Our Incomparable Features

EXPERIENCE

Envy-inducing coolness everywhere

[Social media friendly]

- Your own 5-star hotel suite
- A perfect escape where **nothing** is like home
- Friend and family-friendly [they will be jealous]
- Focus on the view, the mountain experience

ENVIRONMENTAL

Do the right thing. Live with the land

- Minimal grading and environmental impact
- Low-carbon steel framing
- Extreme insulation
- Triple glazed commercial grade windows
- Long-lasting materials
- LED Lighting
- All electric
- Two-zone mini-split ductless heating
- Rheem® ProTerra™ hybrid heat pump water heater
- Whole house energy recovery ventilation

SMART

We'll turn the lights [and heat!] on for you

- Amazon Alexa voice and app-controlled
- Smart lights
- Smart security
- Smart cameras
- Smart heat and air conditioning
- Smart hot water
- Smart door locks
- Smart indoor air quality ventilator
- Integrated sound and video

FIRE RESISTANCE

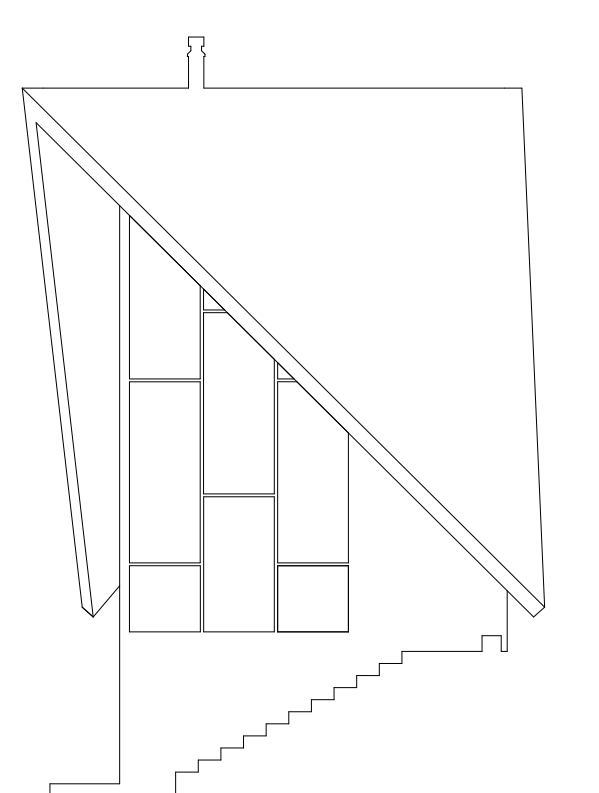
We want to be hot on the net, not literally hot

- Steel framing
- Fire-resistant exterior wall finish
- Fire-resistant roof finish
- Triple glazed windows - 1 pane tempered
- Steel balcony
- Steel/ concrete stairs
- Glass railings

DETAILS

Details are the difference between good and great

- Soaring ceilings
- Glass walls
- Wood-burning fireplace and fire pit
- Warm wood finishes
- Cool stone finishes
- Amazing balconies with glass rails
- Premium premanufactured bathroom [available option]
- Premium premanufactured kitchen [available option]
- Custom built-in bedroom built-in furniture [available option]
- Custom built-in loft built-in furniture [available option]





Your Diamond**CABIN** in 4 Steps

1

Choose + configure

Choose and customize your DiamondCABIN Kit based your dream lifestyle. Choose the layout, materials, colors and details you need and want .

2

We get to work

Our design team creates plans based on your choices, then our factory gets to work .

3

Prepare site + assemble

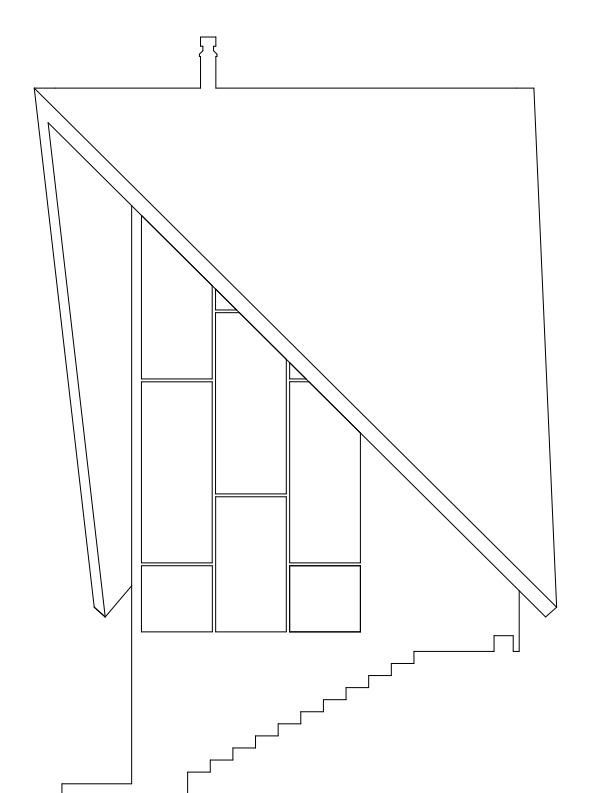
Choose a local contractor to prepare your site and assemble your DiamondCABIN Kit .

4

Move in

We deliver your DiamondCABIN Kit in 4-6 months. You live the life .

[Get an estimate](#)



Compare: Premium Quality + Best Prices

	Quality		Price	Ease of use	
	Commercial-grade products	Steel structure premium materials		Lowest prices	Permitless* turnkey install
ABÖD 36 DiamondCABIN Kit	✓	✓	✓	Easy assembly Kit	✓
ABÖD 36 glasHOUS 1	✓	✓	✓	✓	✓
Others	no	no	no	turnkey, permit required	no
Traditional contractor	no	no	no	no	no

* glasHOUS 1 is less than 120 square feet. In most jurisdictions, due to its size and installation method, glasHOUS 1 is considered a "garden shed" and therefore does not require planning approval or a building permit. Owners must contact the local government or construction department to confirm local requirements.

[Get an estimate](#)

